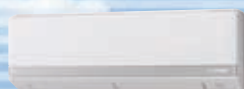


Inverter Multi-split System



The multi-split system allows a single outdoor unit to service a range of configurations of up to six indoor unit ---- from a lineup of 8 units ranging from 6.0kW to 19.5kW.



ZJX, ZK, ZJ
Wall Mounted type **SRK**



Ceiling Concealed type **SRR**



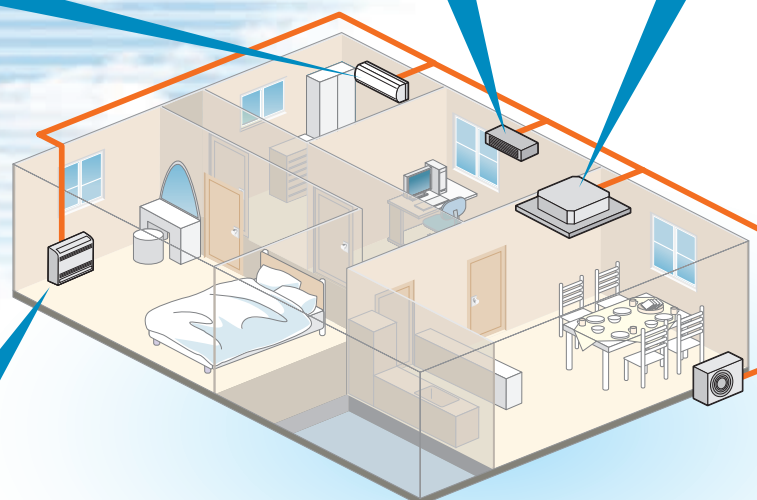
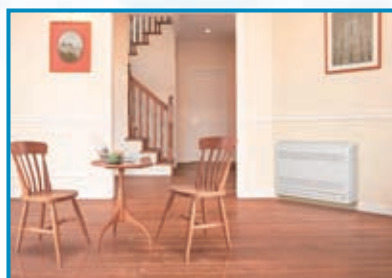
4way Ceiling Cassette type **FDTC**



Fits into standard
600 x 600 ceiling



Floor Standing type **SRF**



Ceiling Suspended type **FDN**



Duct Connected type **FDUM**



OUTDOOR UNIT



SCM40ZJ-S, SCM45ZJ-S
SCM50ZJ-S1, SCM60ZJ-S1



SCM71ZJ-S1, SCM80ZJ-S1



SCM100ZJ-S1, SCM125ZJ-S1

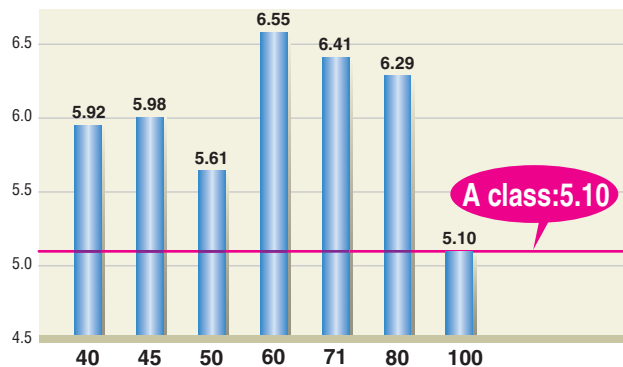
The industry's highest SEER/SCOP levels

Our new models, SCM40~125ZJ-S have achieved the highest level of SEER/SCOP in the industry with full model change to both of outdoor and indoor (SRK series) units.

Outdoor unit uses new advanced compressors with new inverter control (Vector control) and new M shape fin.

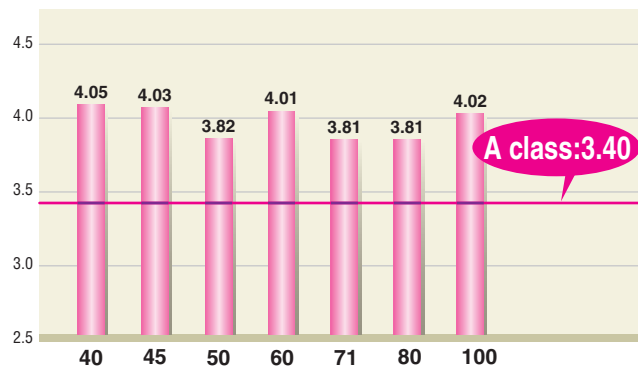
Indoor units SRK series are the latest series, which are common to both of single and multi system, using the new heat exchanger and improved air flow system.

SEER in Cooling



The above values are based on indoor unit combination with SRK-ZJX-S/S1 only.

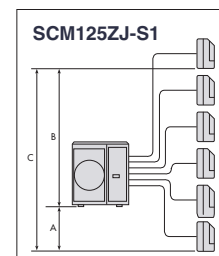
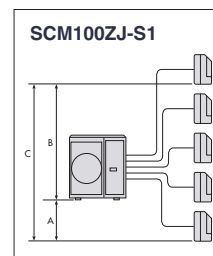
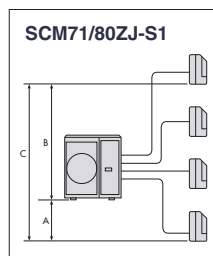
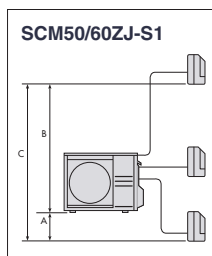
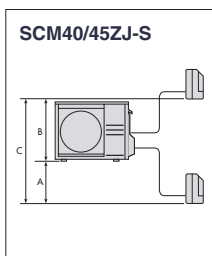
SCOP in Heating



PIPING LENGTH

Limit The maximum piping length of the refrigerant pipes for the outdoor units, and the maximum height difference for the outdoor units are as shown below.

		SCM40/45ZJ-S	SCM50/60ZJ-S1	SCM71/80ZJ-S1	SCM100/125ZJ-S1
height difference	length for one indoor unit	under 25m	under 25m	under 25m	under 25m
	total length for all rooms	under 30m	under 40m	under 70m	under 90m
	lower installation spot of the indoor unit (A)	under 15m	under 15m	under 20m	under 20m
	upper installation spot of the indoor unit (B)	under 15m	under 15m	under 20m	under 20m
	maximum height difference of the indoor units (C)	under 25m	under 25m	under 25m	under 25m
	length of precharged refrigerant pipe	30m	40m	40m	50m



OUTDOOR UNIT SPECIFICATIONS

Model		For two rooms		For three rooms		For four rooms		For five rooms	For six rooms	
		SCM40ZJ-S	SCM45ZJ-S	SCM50ZJ-S1	SCM60ZJ-S1	SCM71ZJ-S1	SCM80ZJ-S1	SCM100ZJ-S1	SCM125ZJ-S1	
Power Source		1Phase, 220 - 240V, 50Hz								
Nominal cooling capacity (Min~Max)		kW	4.0(1.8~5.9)	4.5(1.8~6.4)	5.0(1.8~7.1)	6.0(1.8~7.5)	7.1(1.8~8.8)	8.0(1.8~9.2)	10.0(1.8~12.0)	12.5(1.8~14.0)
Nominal heating capacity (Min~Max)		kW	4.5(1.4~6.9)	5.6(1.4~7.4)	6.0(1.4~7.5)	6.8(1.5~7.8)	8.6(1.5~9.4)	9.3(1.5~9.8)	12.0(1.5~13.5)	13.5(1.5~14.0)
Power Consumption	Cooling	kW	0.84(0.49~1.90)	1.04(0.49~2.14)	1.08(0.50~2.15)	1.43(0.50~2.39)	1.74(0.48~2.75)	2.16(0.48~2.83)	2.86(0.65~4.03)	3.90(0.65~4.80)
	Heating	kW	0.90(0.47~2.30)	1.20(0.47~2.57)	1.31(0.48~2.58)	1.51(0.60~3.00)	2.00(0.60~3.35)	2.26(0.26~3.43)	2.93(0.70~3.40)	3.25(0.70~3.42)
EER	Cooling		4.76	4.33	4.63	4.2	4.08	3.70	3.50	3.21
COP	Heating		5.00	4.67	4.58	4.5	4.30	4.12	4.10	4.15
Inrush current (Max)		A	4.1/4.0/3.8(14)	5.5/5.3/5.1(14)	6.0/5.8/5.5(15)	7.1/6.8/6.6(17)	9.2/8.8/8.4(20)	10.4/10.0/9.5(20)	13.3/12.8/12.2(29)	17.7/17.0/16.3(29)
Sound power level *	Cooling	dB(A)	60	60	62	63	65	66	68	69
	Heating	dB(A)	62	62	65	65	66	66	71	72
Sound pressure level *	Cooling	dB(A)	47	47	49	50	52	54	56	57
	Heating	dB(A)	48	49	52	52	54	54	59	60
Air flow	Cooling		40.0	40.0	41.0	42.0	56.0	56.0	75.0	75.0
	Heating	m³/min	40.0	40.0	41.0	42.0	56.0	56.0	75.0	82.0
Exterior dimensions (H×W×D)		mm	640×850(+65)×290				750×880(+73)×340		945×970(+73)×370	
Net weight		kg	47	47	48	49	62		92	
Outdoor operating temperature range		°C	-15~43							
			-15~24							
Total indoor units capacity		kW	6.0	7.0	8.5	11.0	12.5	13.5	16.0	19.5

The data are measured under the following conditions(ISO-T1). Cooling: Indoor temp. of 27°CDB, 19°CWB, and outdoor temp. of 35°CDB. Heating: Indoor temp. of 20°CDB, and outdoor temp. of 7°CDB, 6°CWB.

* Indicates the value in an anechoic chamber. During operation these values are somewhat higher due to ambient conditions.